

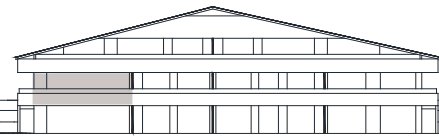
# 4-Z-Wohnung - quadrilocale

familiengerecht, gemütlich, preiswert - familiare, confortevole, conveniente

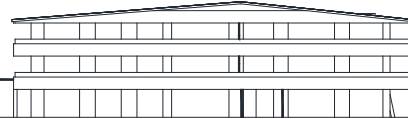
# W8

1. Obergeschoss  
primo piano

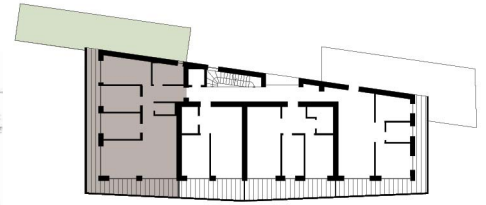
2. OG/piano  
1. OG/piano  
EG/piano terra  
UG/piano interrato



E 3  
E 2  
E 1  
E 0  
E -1



2. OG/piano  
1. OG/piano  
EG/piano terra



91,52 m² Nettowohnfläche  
91,52 mq superficie calpestabile

€ 340.000,-

Preise zuzüglich Kaufsteuern  
Prezzi escl. imposte d'acquisto



115,68 m² Bruttow.fl./sup. lorda  
+ 7,06 m² x 0,25 = 1,77 m² Kellerraum/cantina  
+ 31,73 m² x 0,50 = 15,87 m² Balkon/balcone  
+ 54,38 m² x 0,10 = 5,44 m² Grünfläche/giardino  
= 138,75 m² Verkaufsfll./sup. comm.

# IK<sup>2</sup>

v. 2.0 17-11



Lanz BauArt KG sas  
Projekt und Verkauf - progetto e vendita

Lüsenerstraße 19 via Luson  
I - 39042 Brixen/Bressanone

T: 0472 201707 | F: 0472 251991  
info@lanz.it | www.lanz.it