

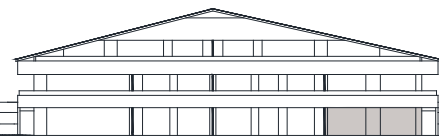
2-Z-Wohnung - bilocale

zeitnah, attraktiv, originell - a tempo, attraente, personale

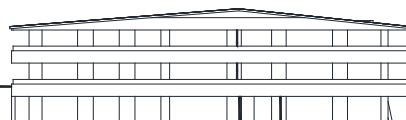
W1

Erdgeschoss
piano terra

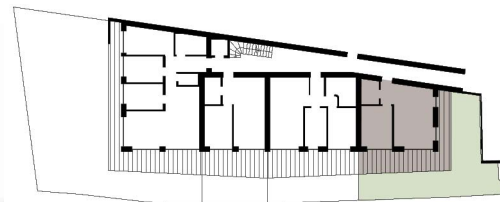
2. OG/piano
1. OG/piano
EG/piano terra
UG/piano interrato



E 3
E 2
E 1
E 0
E -1



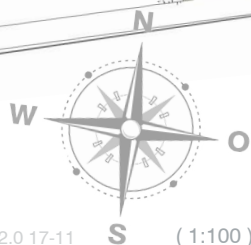
2. OG/piano
1. OG/piano
EG/piano terra



48,31 m² Nettowohnfläche
48,31 mq superficie calpestabile

€ 195.000,-

Preise zuzüglich Kaufsteuern
Prezzi escl. imposte d'acquisto



61,64 m² Bruttow.fl./sup. lorda
+ 6,85 m² x 0,25 = 1,71 m² Kellerraum/cantina
+ 31,34 m² x 0,30 = 9,40 m² Terrasse/terrazza
+ 65,61 m² - 17,30 m² = 48,31 m² x 0,10 = 4,83 m² Grünfläche/giardino
= 77,59 m² Verkaufsfl./sup. comm.



Lanz BauArt KG sas
Projekt und Verkauf - progetto e vendita

Lüsenerstraße 19 via Luson
I - 39042 Brixen/Bressanone

T: 0472 201707 | F: 0472 251991
info@lanz.it | www.lanz.it